



the
Extraordinary Care

C A M P A I G N

C A M P A G N E

Soins
extraordinaires



Friends
FOUNDATION



LA FONDATION
Amis

Our vision is to raise \$8 million

to enhance two major areas of strength that will help the medical team at The Moncton Hospital provide exceptional care for every person, every day. These developments will help put us at the cutting edge of patient care and create a lasting legacy for generations.

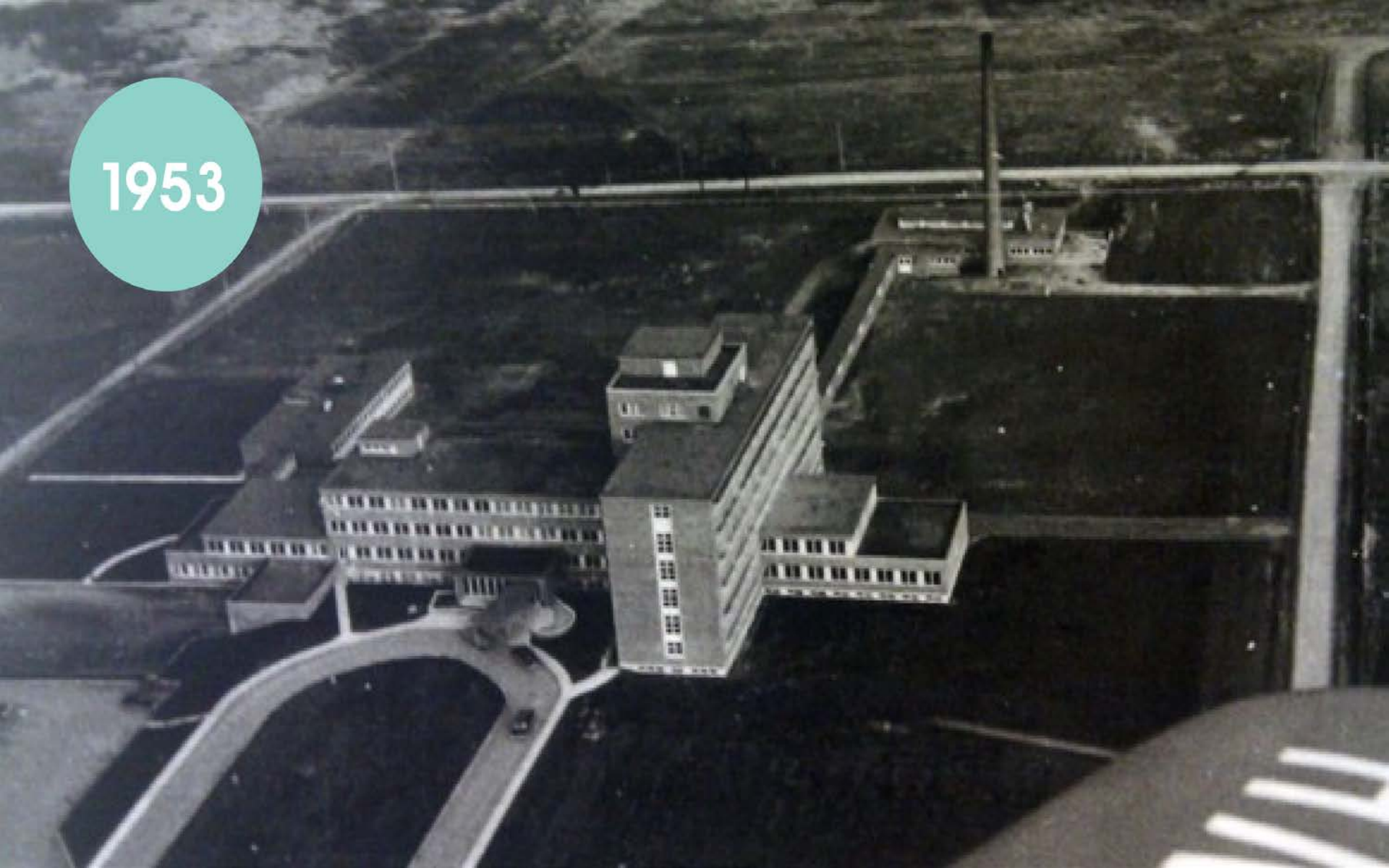
MATERNITY
& NEWBORN
UNIT



CARDIAC
CARE



1953



**PRESENT
DAY**



OUR VISION IS TO MAKE OUR

Maternity and Newborn Unit

a place where families feel safe and comfortable,
where they have the privacy they need in a warm
and inviting atmosphere. We want to make this
a reality for all new parents.

MATERNITY
& NEWBORN
UNIT



CURRENT
MATERNITY AND
NEWBORN UNIT



CURRENT
MATERNITY AND
NEWBORN UNIT



**Did you
KNOW?**

Southeastern New Brunswick is the fastest growing region in the province and, as a result of that, is expected to see an increase in the number of babies born.

According to Statistics Canada's projections, our region's population of women aged 18-44 is expected to

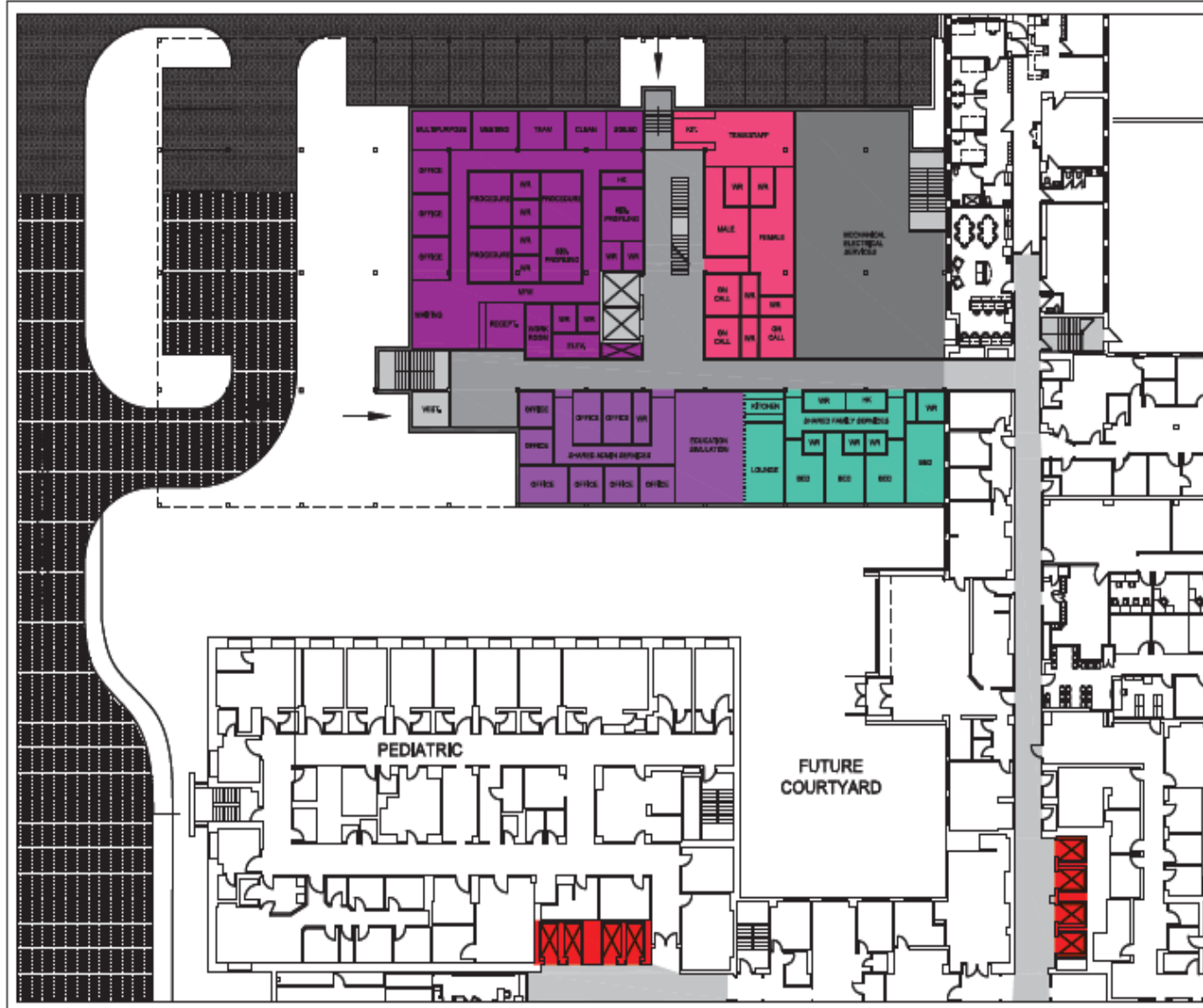
**increase by
13% by 2035.**





Arch: Project No. 140164188

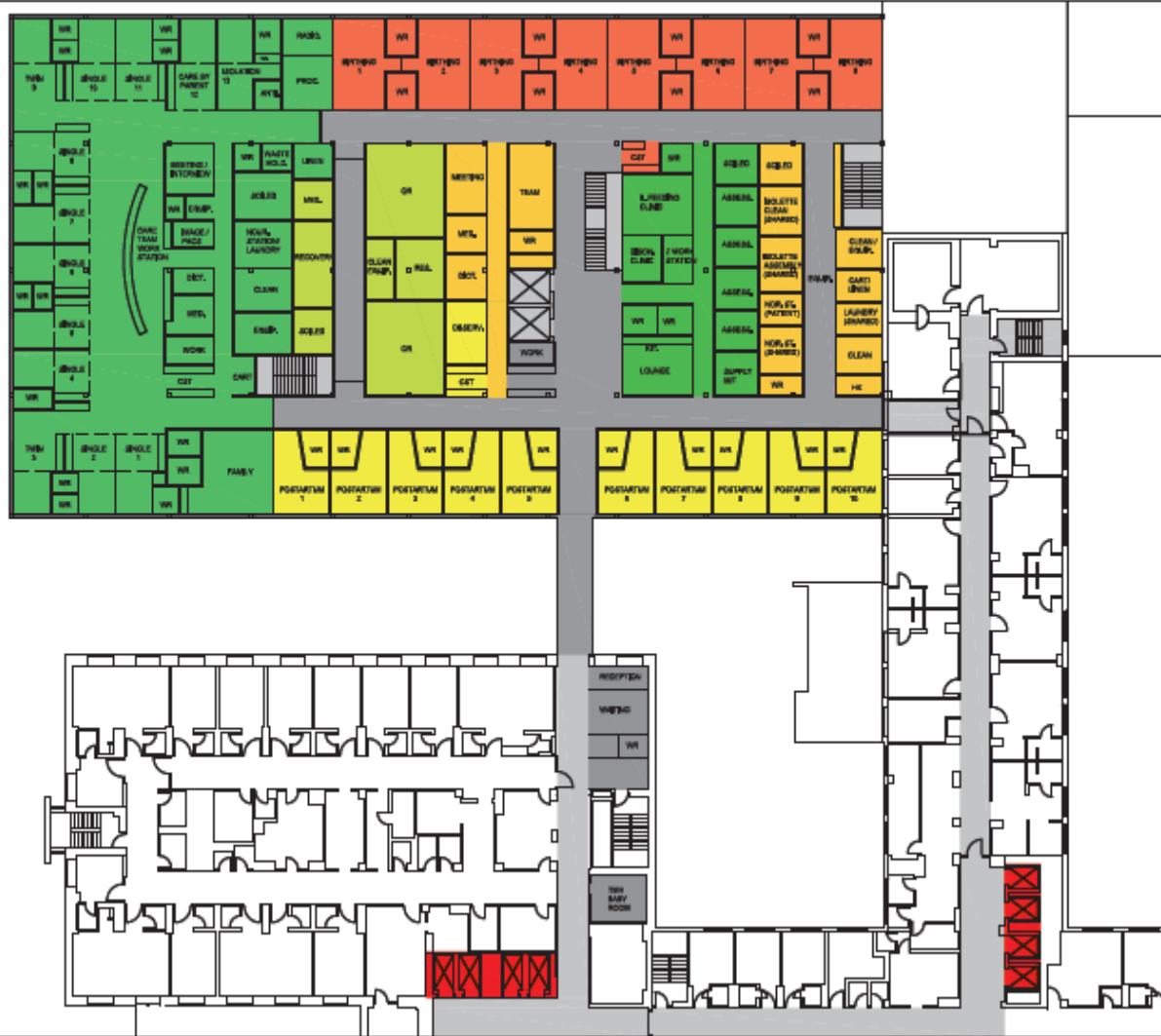




Moncton Hospital **WOMEN'S NEWBORN SERVICES**

LEVEL 1

February 5, 2016



SCENARIO 2
LEVEL 2

February 8, 2018



CONCEPT
MATERNITY AND
NEWBORN UNIT

CONCEPT
MATERNITY AND
NEWBORN UNIT



CONCEPT
MATERNITY AND
NEWBORN UNIT



OUR VISION FOR THE

Cardiac Care Program

is to offer our comprehensive scope of heart assessments, diagnosis, treatment and management services in one space that better supports patient-centred care and enables our expert care team to work more effectively.



CARDIAC
CARE
UNIT



CURRENT
CARDIAC CARE UNIT



Did you
KNOW?



1 in 5 deaths

**among New Brunswickers
is from heart disease.**

With education about healthy lifestyles
and effective assessment, diagnosis,
treatment and management, we are
continuing to bring those numbers down.

Did you
KNOW?

Currently there are 600 patients admitted to the Cardiac Intensive Care Unit and 1,450 patients admitted to the Cardiac Stepdown Unit per year. Projections show that the number of patient days in these units will

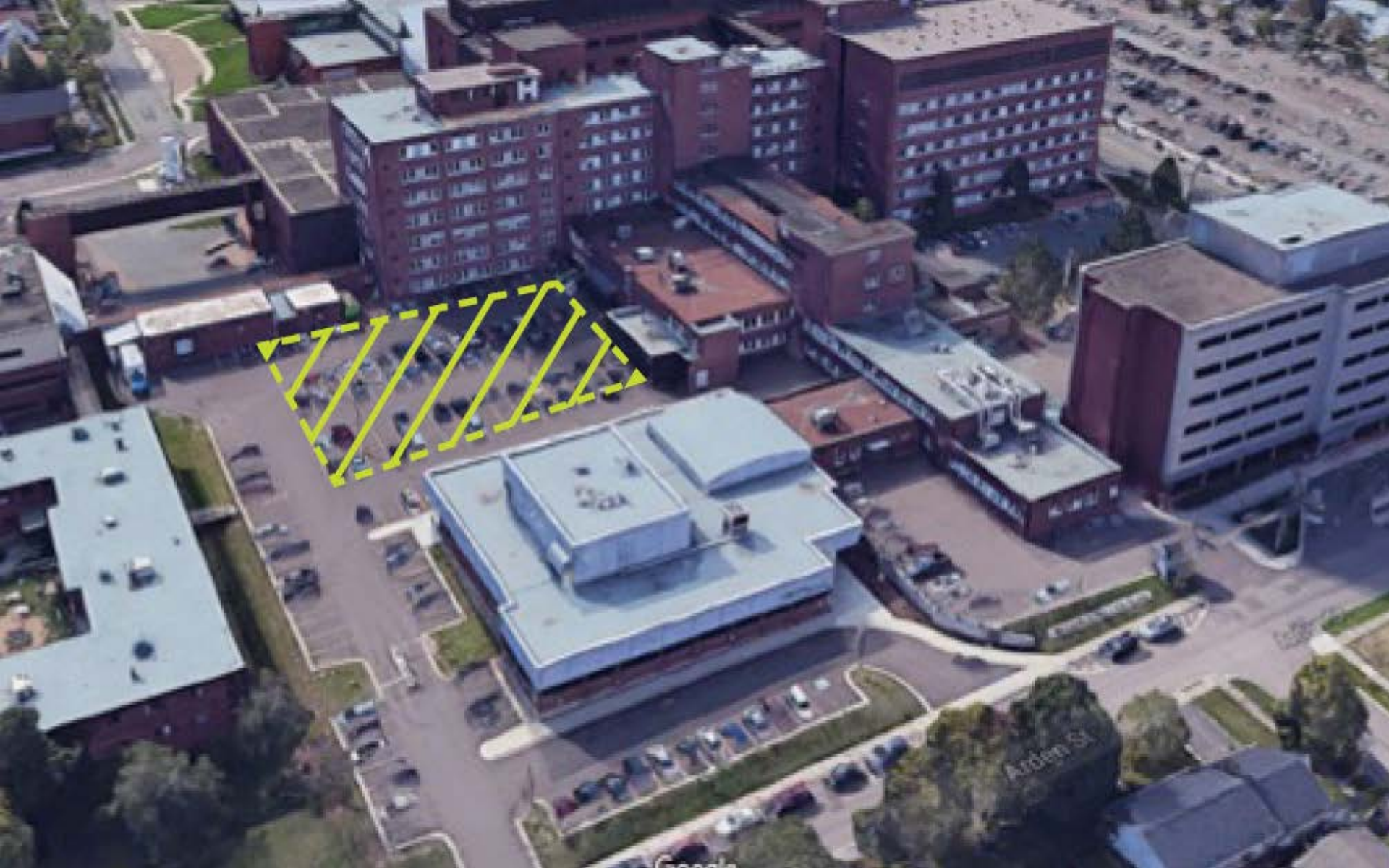
**increase
by 21%**
over the next 5 years.



CONCEPT
CARDIAC CARE UNIT



CONCEPT
CARDIAC CARE UNIT



#CARINGITFORWARD

JOIN THE GIVING