

SNOW REMOVAL PLAN 2018

Summary of new Level of Service Description

Service Level	Roadway Type	Current plan	New definition Roadway Type	New LOS (bold)
Critical Areas	major intersections / hills / bridges	<ul style="list-style-type: none"> Start salting at the beginning of the storm 	major intersections / Hills / Bridges	<ul style="list-style-type: none"> Start salting at the beginning of the storm
Level 1	Emergency and Bus routes	<ul style="list-style-type: none"> Start salting at the beginning of the snowstorm. Plowing will start once slush begins to form. Plowed to bare pavement, curb to curb, within 4 hours after storm. Streets are salted within 6 hours after storm. 	Arterial & Collector Primary	<ul style="list-style-type: none"> Start salting at the beginning of the snowstorm. Plowing will start once slush begins to form. Plowed to bare pavement, curb to curb, within 4 hours after storm ends. Streets are salted within 6 hours after storm.
Level 2	Major Streets and collectors	<ul style="list-style-type: none"> Start salting at the beginning of the snowstorm. Plowing operations begin after 10 cm of snow. Normally plowed to bare pavement, curb to curb, within 6 hours after storm ends. Streets are salted within 6 hours after storm. 	Bus Routes & Collector Minor	<ul style="list-style-type: none"> Start salting at the beginning of the snowstorm. Plowing operations begin after 10 cm of snow. Plowed to bare pavement, curb to curb, within 6 hours after storm ends. Streets are salted within 6 hours after storm.

Level 3	Local or residential streets	<ul style="list-style-type: none"> Plowing operations begin after 10 cm of snow. Centerlines of streets are salted within 6 hours after storm. 	Local / Residential streets	<ul style="list-style-type: none"> Plowing operations begin after 10 cm of snow. Centerlines of streets are salted within 6 hours after storm.
Sidewalks		<ul style="list-style-type: none"> All sidewalks are maintained Sidewalks are plowed and salted within 24 hours after storm ends. 	Level 1	<ul style="list-style-type: none"> Sidewalks near school zones and heavily travelled arterial streets plowed within 12 hours after storm. Example: Buckingham, Cleveland, Whitepine, Chambers, Devere, Canterbury, Trites, etc...
			Level 2	<ul style="list-style-type: none"> All other sidewalks are cleared within 48 hours. Example: Lawson, Carriage Hill, Old Coach, Runnymede, McDowell, Trites ext, etc...
			Level 3	<ul style="list-style-type: none"> Not Plowed during winter Example: Small section on Irving Road without sidewalk connectivity, Cleveland extension, Karolie, etc...
Parking lots		<ul style="list-style-type: none"> No LOS policy 		<ul style="list-style-type: none"> Weekdays only, plowed and salted within 24 hours after storm Church parking lots are plowed and salted for Sunday church services.

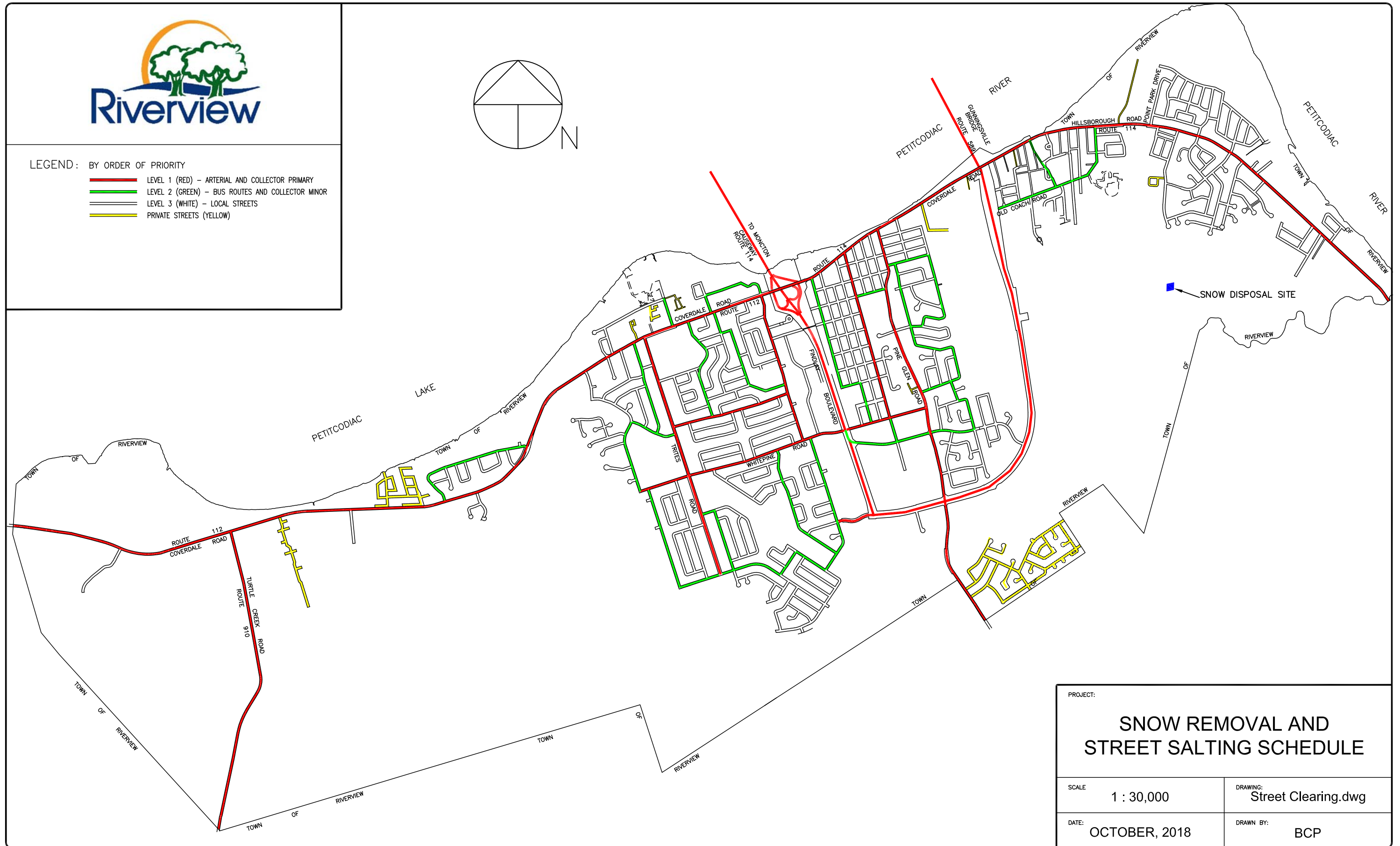
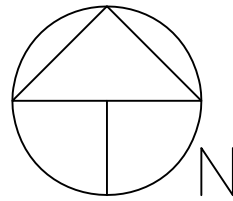
<p>Trails</p>		<ul style="list-style-type: none"> No LOS policy 		<ul style="list-style-type: none"> Only certain trails are cleared of snow during winter. Certain trails will be cleared within 48 hours: <p><u>Parks & Recreation</u></p> <ul style="list-style-type: none"> Pinder ext. Findlay to Lawson Pine Glen (Coverdale to Cross Creek) Gunningsville (Bridge to Pinder) Riverfront Trail (Causeway to Avondale) Sawgrass to Runneymeade <p><u>Public Works</u></p> <ul style="list-style-type: none"> Mabel (Trites to Wilson) Old Coach to Gunningsville Canterbury to Page Bradford Pedway Hebron (McAllister to Pine Glen) Kasley Park Buckingham trails to RHS property
<p>Fire Hydrants</p>		<ul style="list-style-type: none"> No LOS policy 		<ul style="list-style-type: none"> Start clearing when snow prevents access to front cap All cleared within 5 working days from storm Cleared based on following priority: <ol style="list-style-type: none"> High risk buildings, Coverdale, Hillsborough, Seniors complex, institutional (schools), business district Residential area

<p>Winter Shifts</p>	<p>November 15 to April 15 Weekday M-F (8am–4:30pm) 11 Operators 4 foreman</p> <p>November 15 to April 15 Evening M-F (4pm–midnight) 2 Operators</p> <p>November 15 to April 15 Night M-F (midnight–8am) 2 Operators</p> <p>Weekend Friday midnight to Sunday midnight No shift</p> <p><i>Winter parking by-law Dec1 to April1</i></p>	<p>December 15 to April 15 Weekday (8am – 4:30pm) 10 Operators 4 foreman</p> <p>January 6* to April 1 Evening (4pm – midnight) 2 Operators <i>* Actual start day is subject to amount of snow on the ground</i></p> <p>December 2* to April 15 Night (midnight – 8am) 2 Operators <i>* Actual start day is subject to amount of snow on the ground</i></p> <p>Weekend Friday midnight to Sunday midnight No shift</p>
-----------------------------	--	--



LEGEND: BY ORDER OF PRIORITY

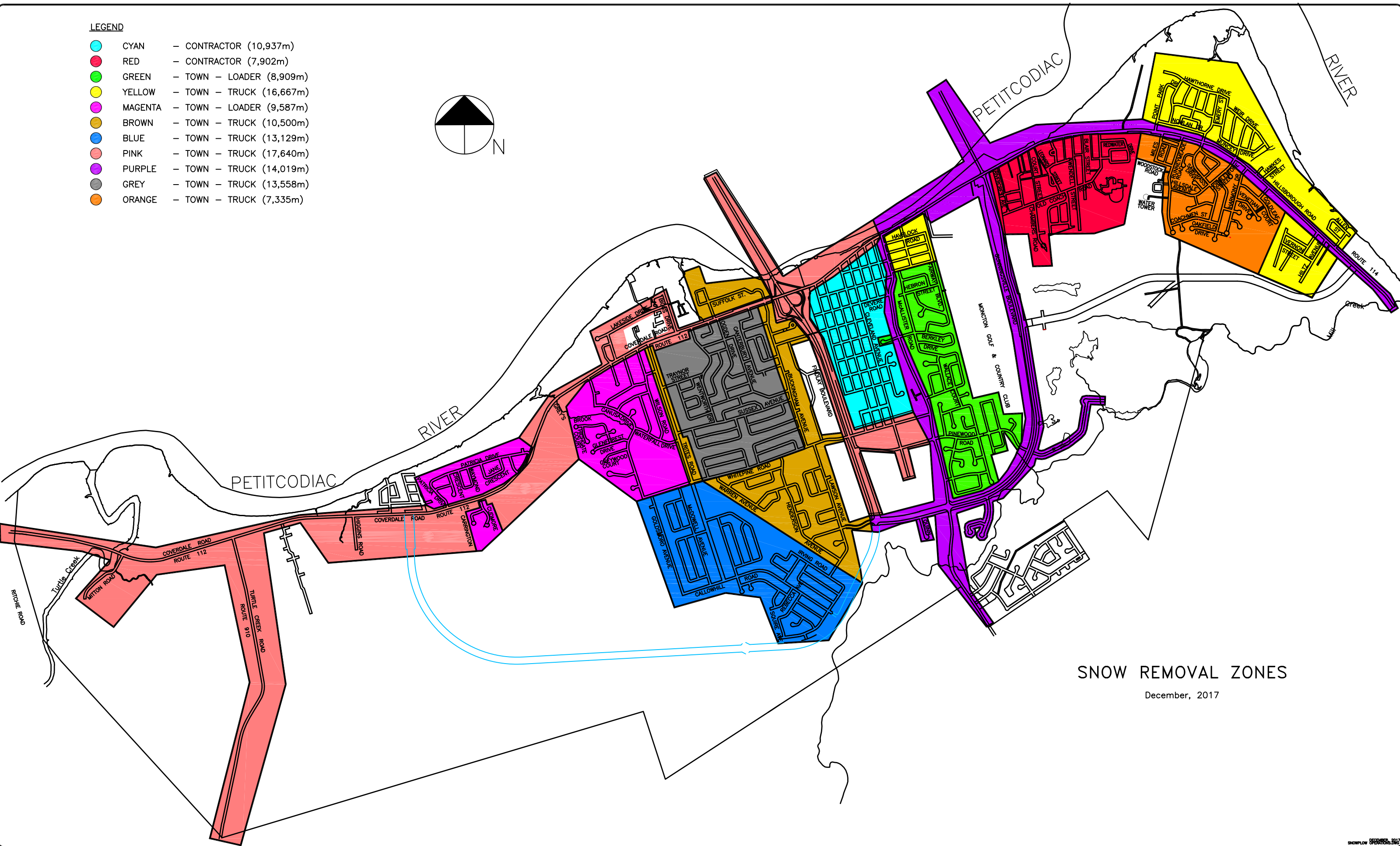
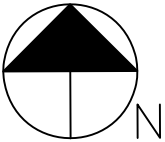
- LEVEL 1 (RED) - ARTERIAL AND COLLECTOR PRIMARY
- LEVEL 2 (GREEN) - BUS ROUTES AND COLLECTOR MINOR
- LEVEL 3 (WHITE) - LOCAL STREETS
- PRIVATE STREETS (YELLOW)



PROJECT: SNOW REMOVAL AND STREET SALTING SCHEDULE	
SCALE 1 : 30,000	DRAWING: Street Clearing.dwg
DATE: OCTOBER, 2018	DRAWN BY: BCP

LEGEND

CYAN	CONTRACTOR	(10,937m)
RED	CONTRACTOR	(7,902m)
GREEN	TOWN - LOADER	(8,909m)
YELLOW	TOWN - TRUCK	(16,667m)
MAGENTA	TOWN - LOADER	(9,587m)
BROWN	TOWN - TRUCK	(10,500m)
BLUE	TOWN - TRUCK	(13,129m)
PINK	TOWN - TRUCK	(17,640m)
PURPLE	TOWN - TRUCK	(14,019m)
GREY	TOWN - TRUCK	(13,558m)
ORANGE	TOWN - TRUCK	(7,335m)



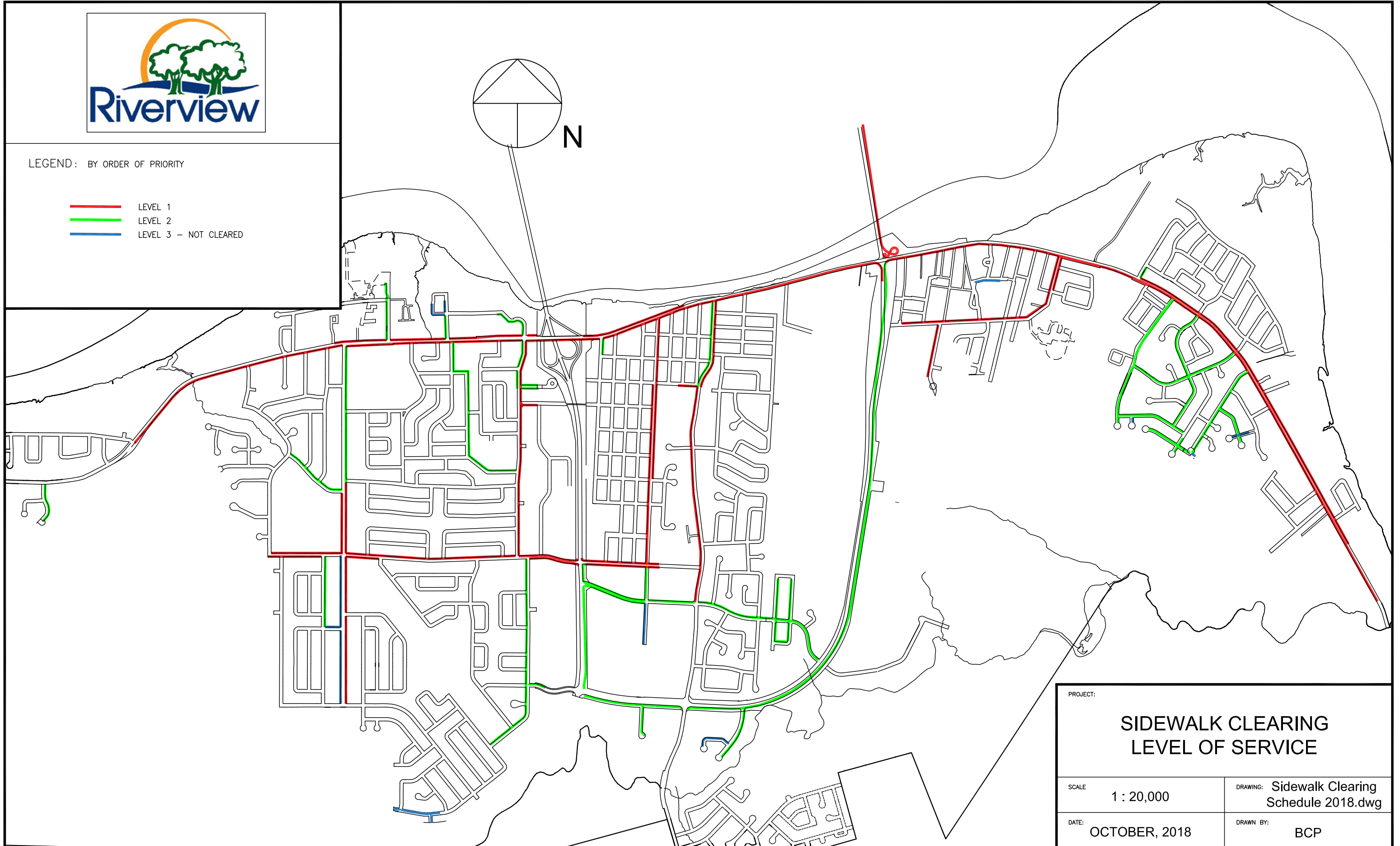
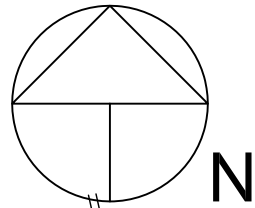
SNOW REMOVAL ZONES

December, 2017



LEGEND: BY ORDER OF PRIORITY

- LEVEL 1
- LEVEL 2
- LEVEL 3 – NOT CLEARED



PROJECT:

SIDEWALK CLEARING LEVEL OF SERVICE

SCALE

1 : 20,000

DRAWING: Sidewalk Clearing
Schedule 2018.dwg

DATE:

OCTOBER, 2018

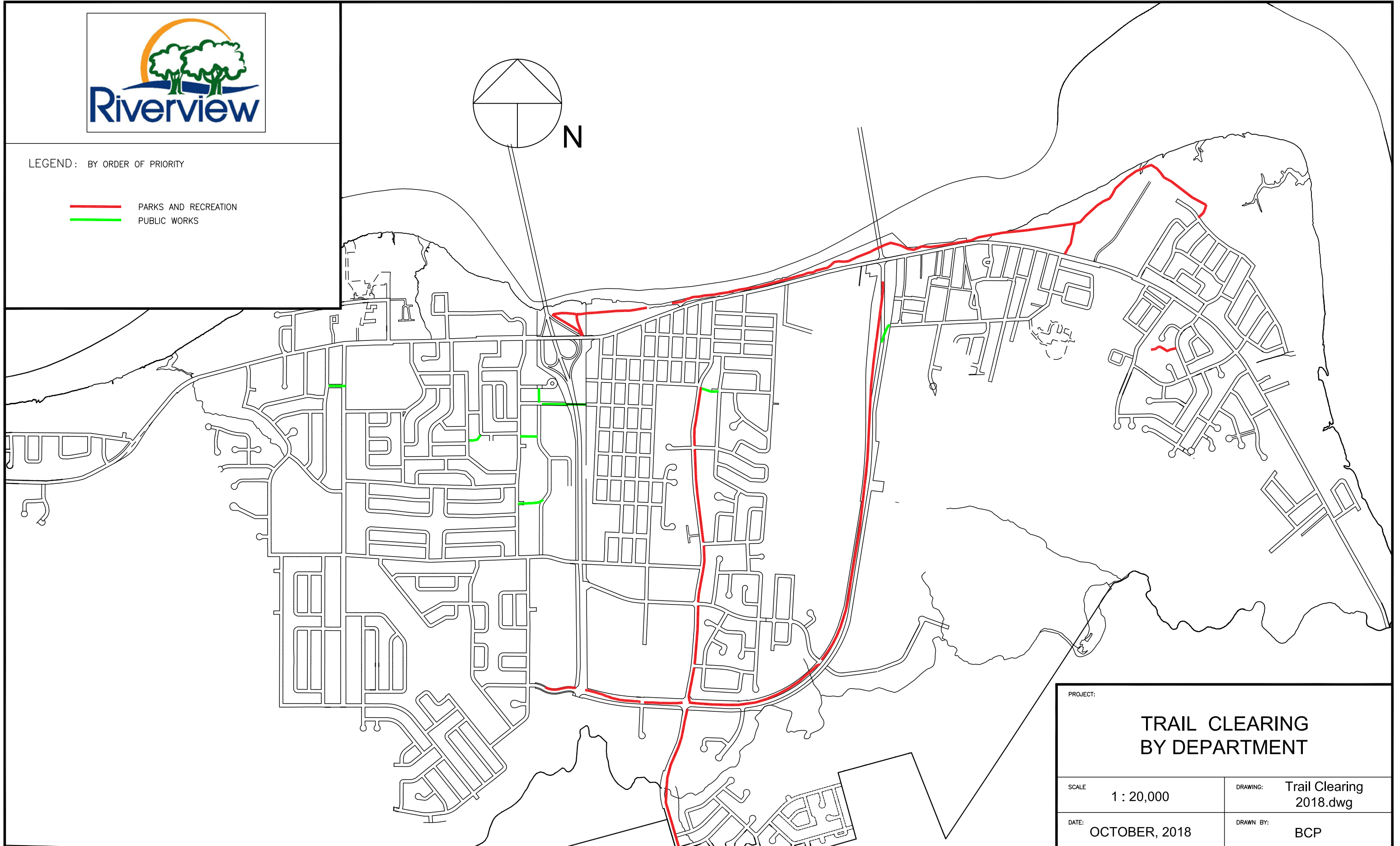
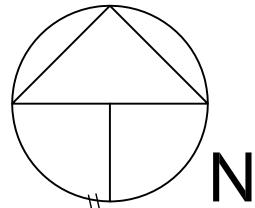
DRAWN BY:

BCP



LEGEND: BY ORDER OF PRIORITY

- PARKS AND RECREATION
- PUBLIC WORKS



PROJECT: TRAIL CLEARING BY DEPARTMENT			
SCALE	1 : 20,000	DRAWING:	Trail Clearing 2018.dwg
DATE:	OCTOBER, 2018	DRAWN BY:	BCP