

An aerial photograph of a suburban neighborhood. The houses are arranged in a grid-like pattern with winding streets. Many houses have swimming pools in their backyards. There are many green trees scattered throughout the neighborhood. The overall scene is bright and sunny.

# BUCKINGHAM M VILLAGE

Community integrated with nature

# AGENDA

WHO WE ARE. OUR MISSION

WHY ON BUCKINGHAM AVE?

OUR PARTNERS

CONSIDERATIONS:  
AFFORDABILITY

PRIVACY

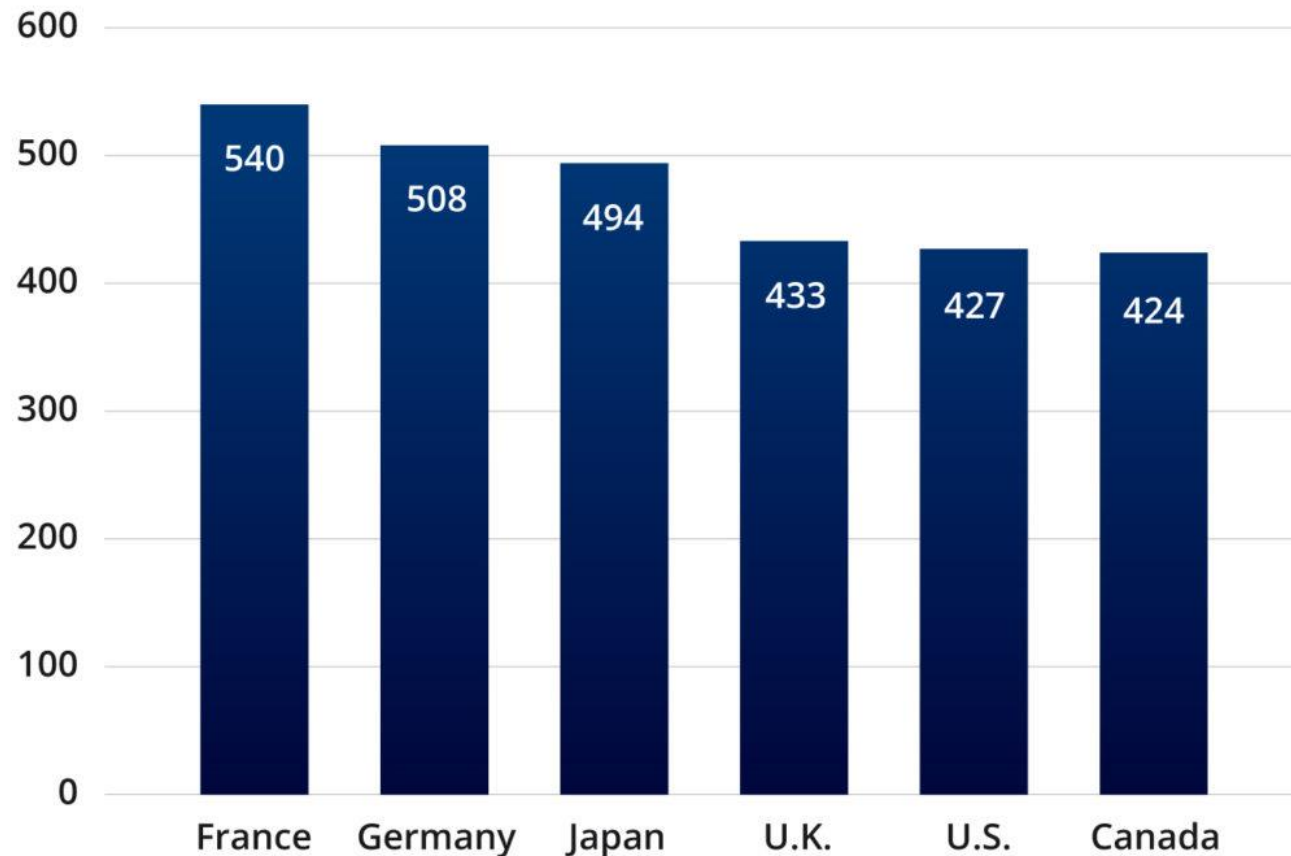
TRAFFIC

CONSTRUCTION

OUR FUTURE RESIDENTS

# WHO WE ARE. OUR MISSION.

## Housing Units Per 1,000 Residents in G7 Countries



Source: Scotiabank



WHY ON BUCKINGHAM AVE?

# OUR PARTNERS



KUB Architecture



Avant Garde  
Construction




J.R. Daigle  
Engineering



EXP

# CONSIDERATIONS: AFFORDABILITY


Global News



N.B. affordable housing wait-list has grown by 2,000 since housing agreement signed - New Brunswick | Globalnews.ca

Visit

Global News



The affordable housing crisis in New Brunswick and the calls for action: 'No more blame game' - New Brunswick |...

Visit



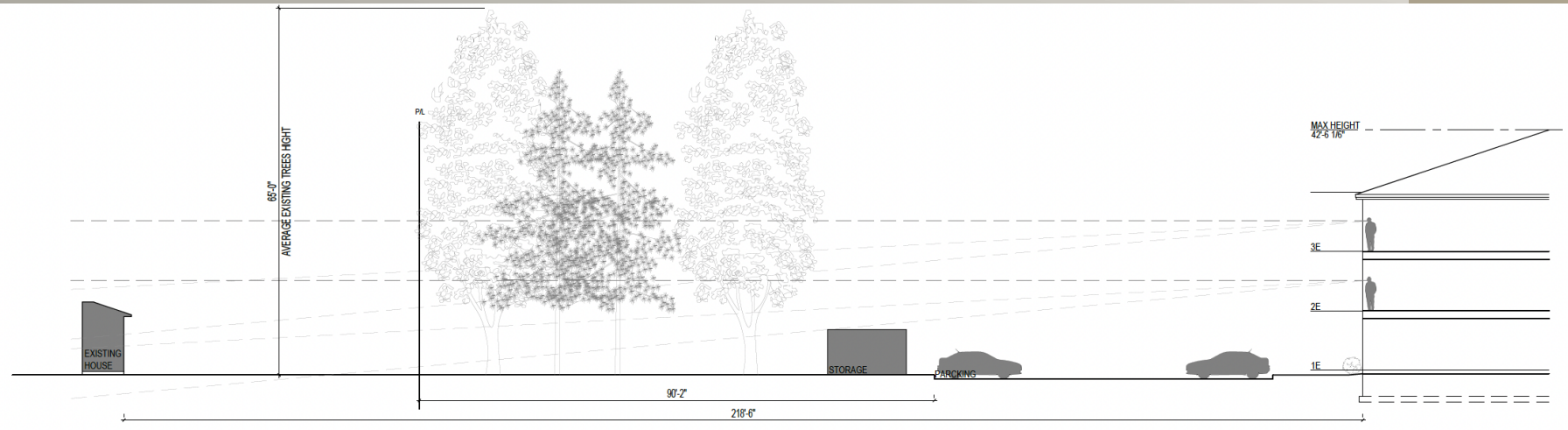
PRIVACY





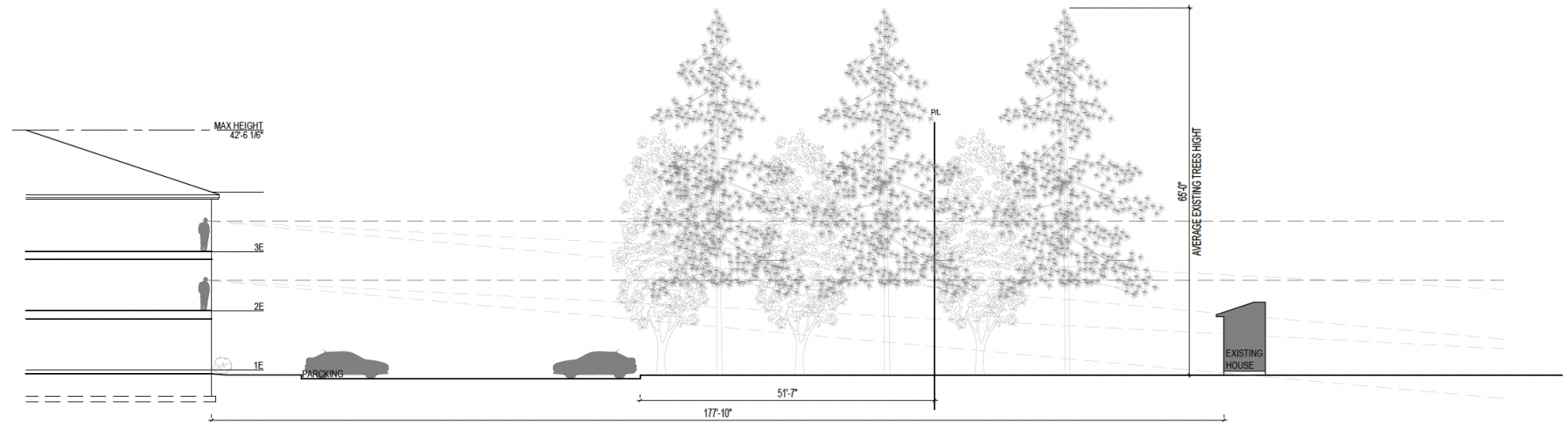
CONTRAIT AND OTHER INTELLECTUAL PROPERTY RIGHTS TO THE PROJECT DESIGN AND ALL RIGHTS RESERVED INCLUDING REVISIONS HEREON ARE THE PROPERTY OF ARCHITECTURE KUB ARCHITECTURE INC. NO PART OF THIS PROJECT MAY BE REPRODUCED OR TRANSMITTED IN ANY FORM OR BY ANY MEANS WITHOUT THE WRITTEN PERMISSION OF ARCHITECTURE KUB ARCHITECTURE INC. OR THE PROJECT'S DESIGN PROFESSIONAL. ALL RIGHTS RESERVED FOR INTELLECTUAL PROPERTY RIGHTS.

LES DROITS D'AUTRES ET AUTRES BIENS DE PROPRIÉTÉ INTELLECTUELLE DE CE PROJET SONT DÉPOSÉS TOUTES RÉSERVES INCLURENT LES RÉVISIONS RÉVISÉES CE PROJET EST LE BIEN DE ARCHITECTURE KUB ARCHITECTURE INC. AUCUNE PARTIE DE CE PROJET NE PEUT ÊTRE REPRODUITE NI TRANSMISE EN AUCUNE FORME OU PAR AUCUN MOYEN SANS L'AUTORISATION ÉCRITE. TOUTES RÉSERVES POUR DROITS DE PROPRIÉTÉ INTELLECTUELLE.



1 BUILDING 1

SCALE: 3/32"=1'-0"



**BUCKINGHAM APARTMENTS**  
 RIVERVIEW, NB

REVISIONS	DESCRIPTION	DATE	#
	PRELIMINARY DRAWINGS		0

# TRAFFIC

Development	Units	AM Peak Hour			PM Peak Hour			Weekday Daily		
		In	Out	Total	In	Out	Total	In	Out	Total
Mid-Rise Apartments Land Use # 221	134	11	39	50	32	20	52	305	305	610

Currently the average daily traffic on Buckingham Avenue adjacent to the site is estimated at 4570 vehicles. By the horizon year 2032 without development, the daily volume is estimated at 4780 vehicles. **The proposed development is projected to add an additional 610 vehicles for a total daily total of 5390 vehicles. The Transportation Association of Canada guidelines indicate that residential collector streets can expect to accommodate upwards of 8000 vehicles daily. From a capacity point of view, Buckingham Avenue is capable of handling the traffic increase from the proposed development.**

# CONSTRUCTION





# OUR FUTURE RESIDENTS













A diverse group of approximately ten people, including men and women of various ages and ethnicities, are walking away from the camera in a line on a grassy field. They are all wearing light blue t-shirts and have their arms around each other's shoulders, suggesting a sense of unity and support. The background consists of lush green trees under a soft, warm light, possibly during sunset or sunrise. The overall mood is positive and collaborative.

WE NEED YOUR  
SUPPORT

# THANK YOU

Maulen Kalau

[maulen@brillante.ca](mailto:maulen@brillante.ca)

Yero Diallo

[yero@dialloproperty.com](mailto:yero@dialloproperty.com)

[www.dialloproperty.com](http://www.dialloproperty.com)