

SHELTER  
MOVERS



TRANSIT  
SECOURS

*You found the courage to leave.  
We'll find the hands to help.*

# Our Mission

**Shelter Movers** is a national, volunteer-powered charity that provides no cost moving and storage services to women and children fleeing abuse.

We offer trauma-informed, survivor-centred and culturally safe services, operating from an anti-oppressive, anti-racist lens.

**Shelter Movers is the only service of its kind in Canada.**



Federally Incorporated  
Reg #776372492RR0001



# Our Impact



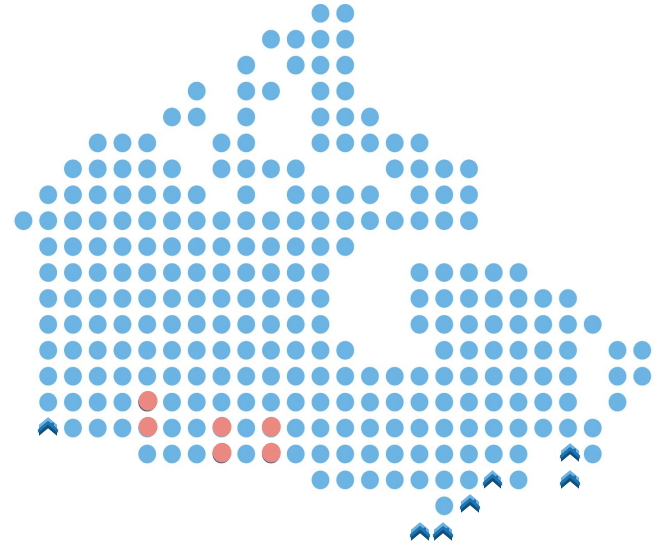
We move **~135 families** per month across 7 chapters



**5,000+ moves** completed since 2016



Beyond moving and storage, we coordinate **security personnel, police escorts, language interpreters, and pet fostering**, at **no cost** to our clients.



**COVID-19 IMPACT:** Nationally, we've experienced an average **66% increase** in demand for our services since the beginning of the pandemic.



# Abuse in Canada: GBV does not discriminate

**110,000+**

Annual cases of  
Intimate  
Partner Violence

**68,000+**

Annual admissions  
to emergency  
women's shelters

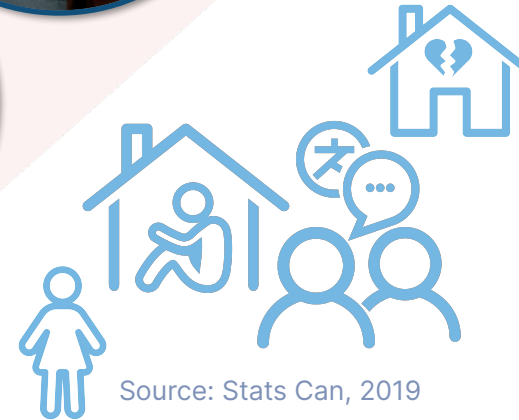
**99%**

of survivors  
are women  
and children

**Thousands** of  
survivors lose  
everything they  
own when they  
flee.

**\$2,200**

Average cost to  
pack and move a  
family home



Source: Stats Can, 2019



# Our Clients

**Shelter Movers' clients come from all walks of life.**

We serve any individual who has experienced gender-based violence, however, this type of violence disproportionately affects women.

The most dangerous time for women experiencing abuse is when they:

1. Announce that they are pregnant or
2. When they communicate their intention to leave.

Between the ages of 18 – 55, who have at least one child under the age of 8.



# Our Volunteers

Powered by 2,000+ incredible volunteers from varied backgrounds and skillsets.

2020 - 2021: 76% increase in recruitment  
Men are invited to join and show allyship in the cause

## Our Selection Process

- ✓ Enhanced Police Reference Check
- ✓ Screening Interviews
- ✓ Trauma-Informed Orientation
- ✓ Specialized Training
- ✓ Ongoing Supervision and Coaching
- ✓ Education / Workshops
- ✓ Mental Health Counselling



# Our Moving Process

1



## Referral

Survivors (**clients**) are referred by any person of authority or public agency, often emergency women's shelters.

2



## Planning and Coordination

**Intake Coordinators** connect with referral agencies to assess logistical and safety concerns.  
**Move Coordinators** prepare a move itinerary, assemble volunteer **Movers** and confer with the client and referring agency.

3



## Move

**Lead Movers** serve as the client's main contact. They lead the move team, **Security** or **Police**, and language interpreters, as necessary.



# How We Work



## Urgent Exit Moves

Volunteers and security personnel collect and transport clients and children from abusive households to a confidential, safe location.



## Escorted Moves

The client is escorted back to their former home with volunteers and security / police to retrieve their belongings.



## Resettlement Moves

Volunteers deliver the client, children, pets, and their stored belongings from the shelter to their new homes.





# The Need



**FUEL**



**INSURANCE**



**STAFF  
SUPPORT**



**VEHICLE  
RENTALS**

**SHELTER MOVERS INCURS AN  
INTERNAL COST OF  
\$250 PER MOVE**



**VOLUNTEER  
TRAINING**



**PERSONAL  
PROTECTIVE  
EQUIPMENT**



**MOVING  
SUPPLIES**



**STORAGE**



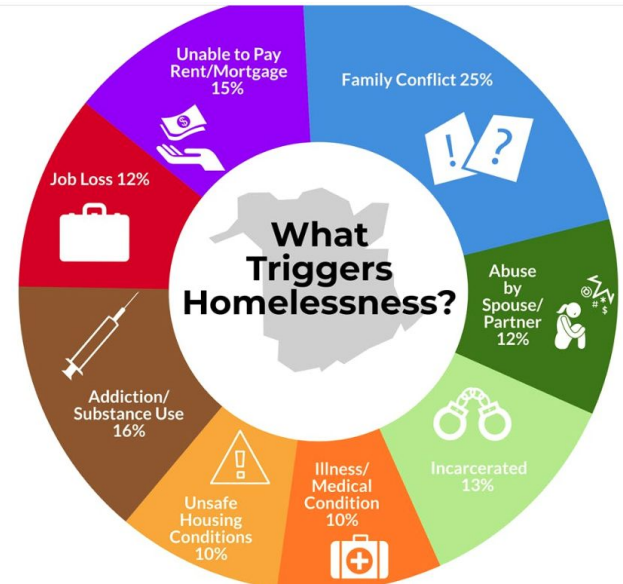
# Our Community and Business Partners

To ensure efficiency in our support for survivors, we work closely with over 250 survivor-serving agencies nationwide, including:



# Why New Brunswick?

- New Brunswick reports the highest per capita rate of murder-suicide in the country
- Two-thirds of all New Brunswick women killed were living with the accused.
- Survivors of family conflict and spousal abuse make up 37% of people experiencing homelessness
- 191 homicides (1999 and 2018), including 52 homicides related to domestic violence (27% of provincial total)



# Shelter Movers Greater Moncton

- First move completed November 19, 2022
- Completed approx. 22 moves
- Officially launched as of January 18, 2023
- Over 55 onboarded volunteers
- Aiming to complete 100 moves in our first year
- Moved clients out of and to Moncton, Dieppe, Riverview, Shediac, Sackville and Miramichi.



“ I am so incredibly grateful. If I could stop laugh-crying, I'd be able to express myself better, but right now, all I can say is, thank you so much for getting me home safely. I am finally **free.**”

**Shelter Movers Client, Survivor**

“ Shelter Movers personnel and volunteers were a **testament to the goodness of humankind** as I was enduring the greatest mental and physical hardships in my life.

**Shelter Movers Client, Survivor**

“ With an energetic two year old, strained financially, and scared, your service removed so much worry, and allowed me to **start my life** with my child, sooner than I expected.

**Shelter Movers Client, Survivor**



Creating a country where leaving abuse is safe, easy, and barrier free.



## Renée Charron

Chapter Director  
[renee@sheltermovers.com](mailto:renee@sheltermovers.com)

[sheltermovers.com](https://sheltermovers.com)



@sheltermovers



Federally Incorporated  
Reg #776372492RR0001

