



Town of Riverview Public Transportation

PRESENTATION TO TOWN COUNCIL

MAY 13, 2019

Presentation Overview



- Quick picture of existing routes
- Redesign Proposal
 - ✦ Routes
 - Options
 - Pros and Cons

Existing Routes



80 – Gunningsville

30 minute route

6:30am – 8:30am Mon –Sat (plus 1 mid-morning combo run)

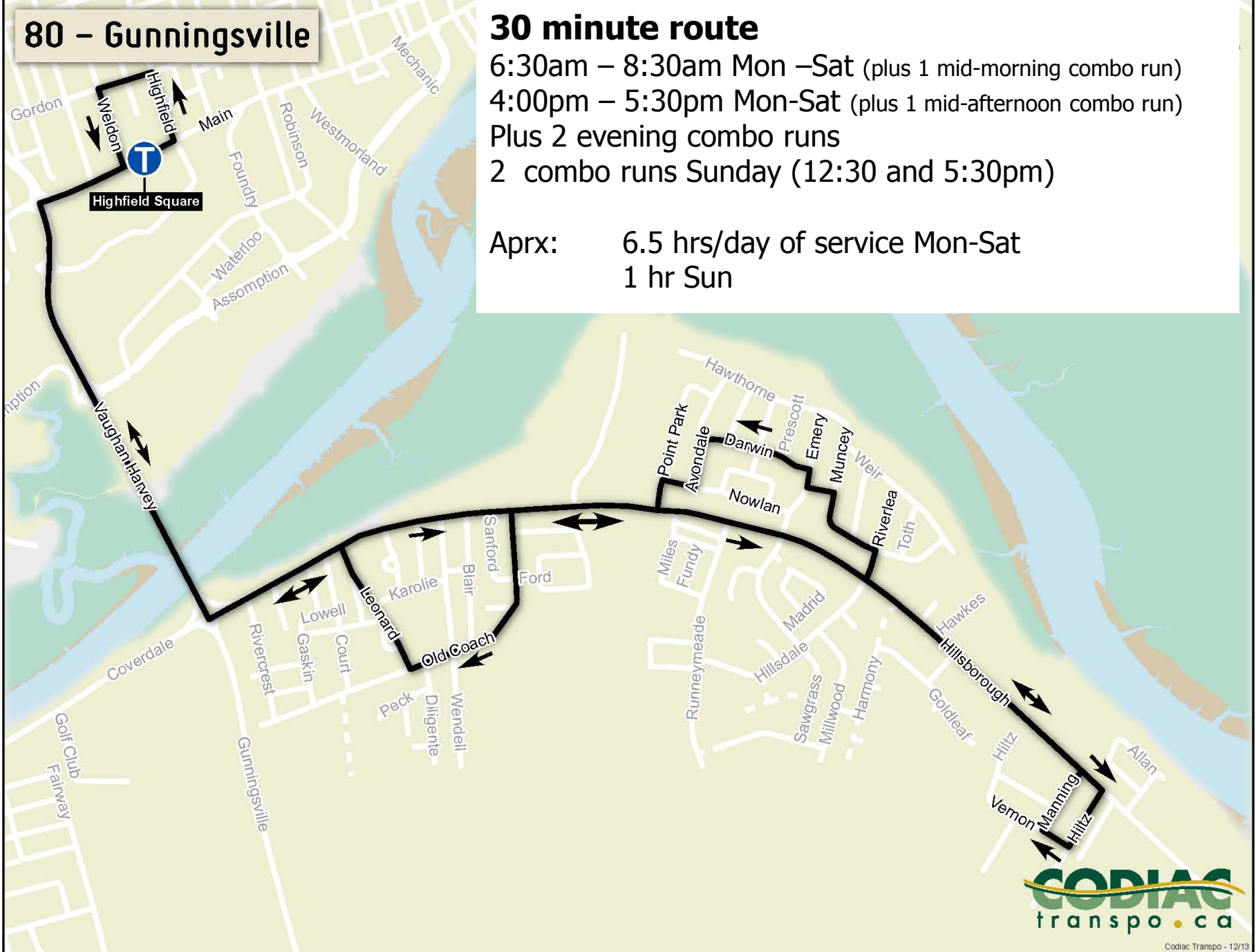
4:00pm – 5:30pm Mon-Sat (plus 1 mid-afternoon combo run)

Plus 2 evening combo runs

2 combo runs Sunday (12:30 and 5:30pm)

Aprx: 6.5 hrs/day of service Mon-Sat

1 hr Sun



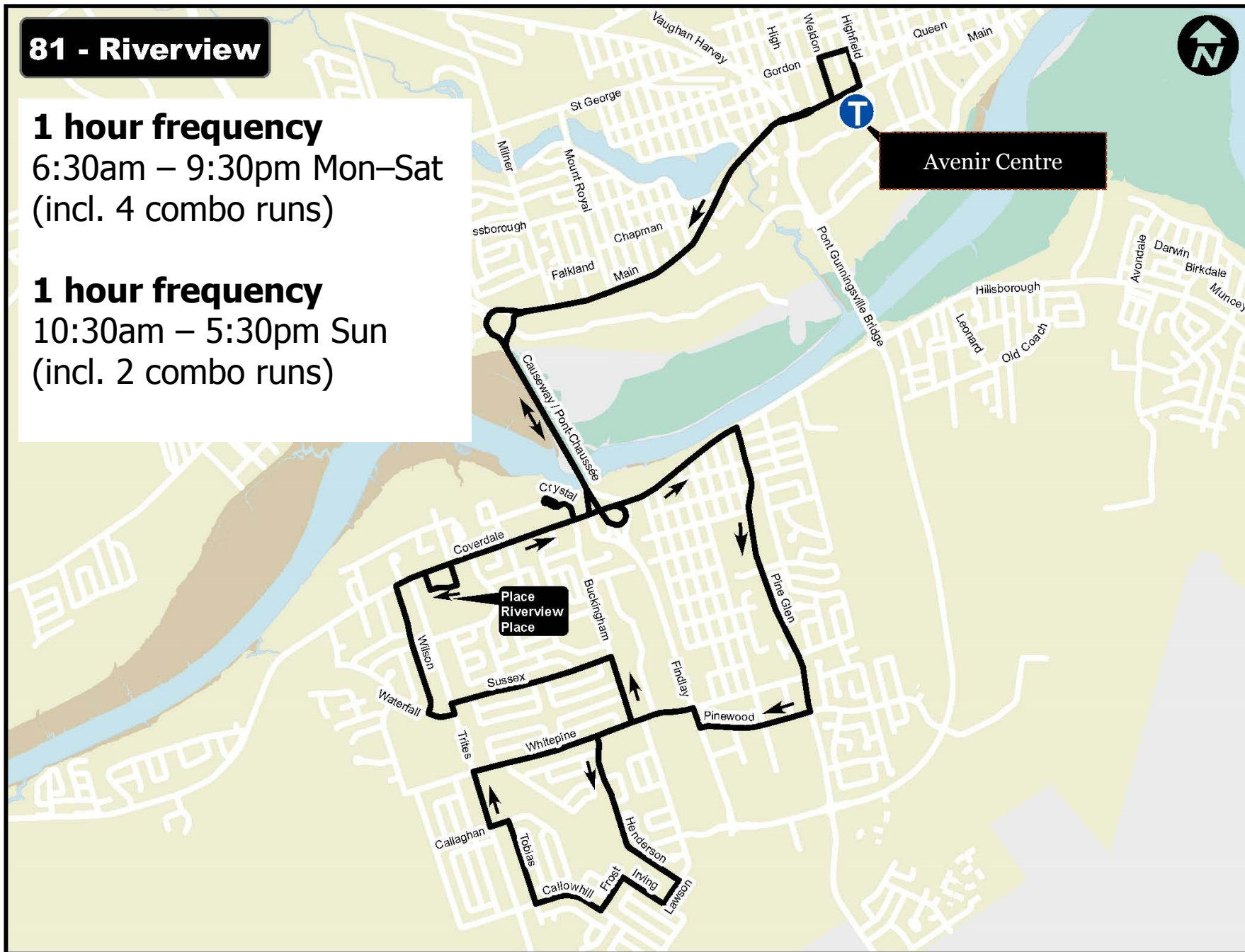
81 - Riverview

1 hour frequency

6:30am – 9:30pm Mon–Sat
(incl. 4 combo runs)

1 hour frequency

10:30am – 5:30pm Sun
(incl. 2 combo runs)



Re-designed- Option 1



Implementation some time in 2020

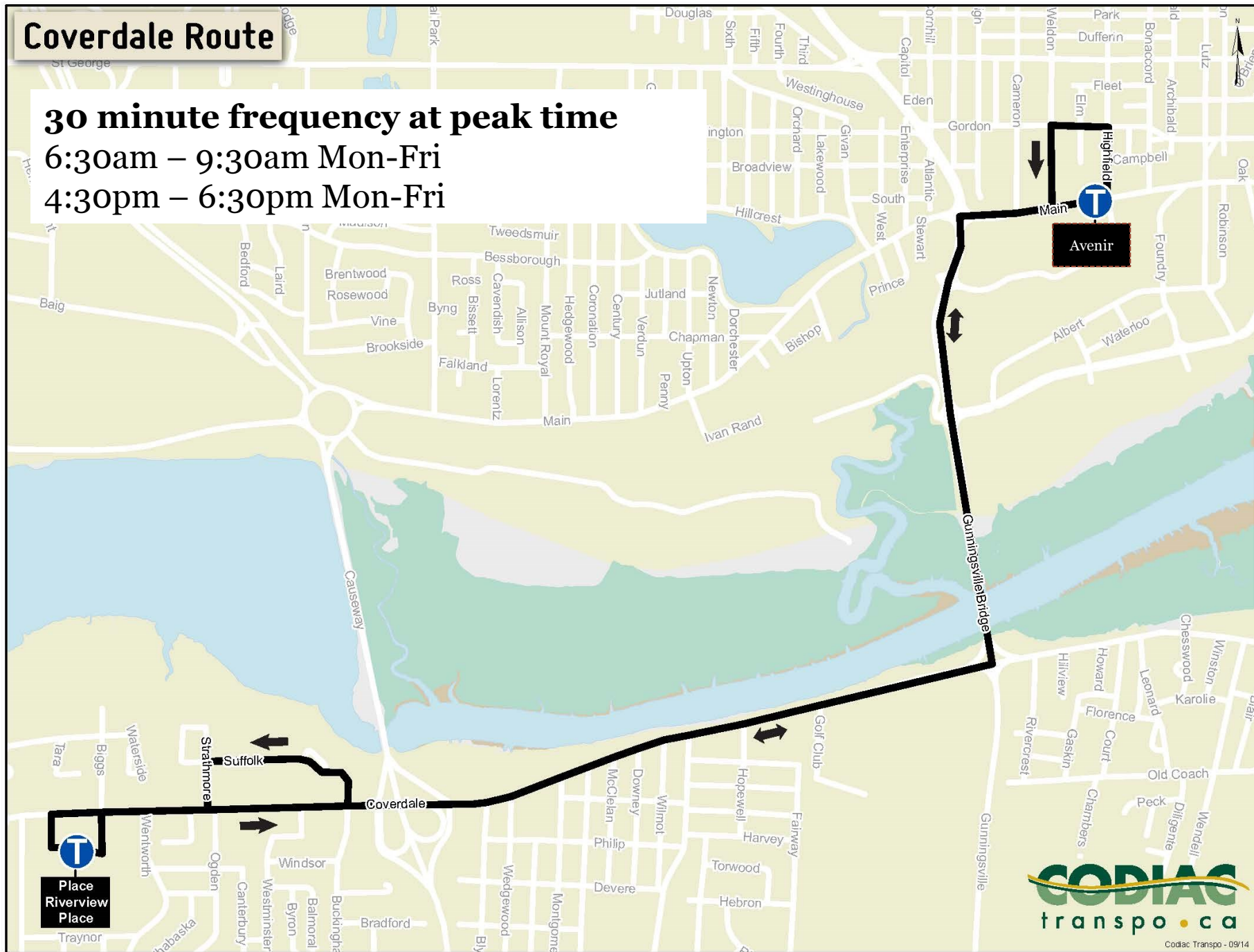
(Options are not in any order of priority)

Coverdale Route

30 minute frequency at peak time

6:30am – 9:30am Mon-Fri

4:30pm – 6:30pm Mon-Fri

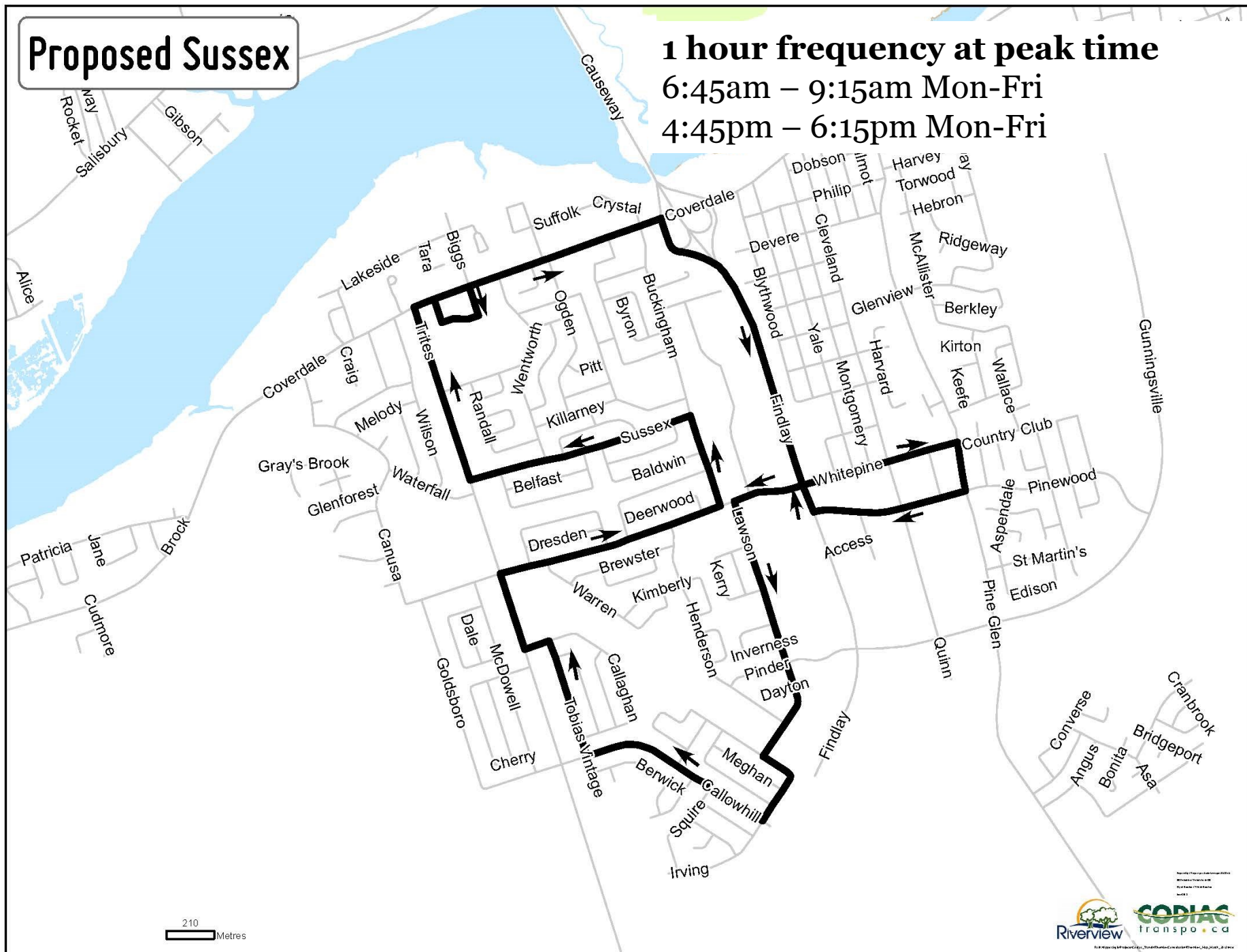


Proposed Sussex

1 hour frequency at peak time

6:45am – 9:15am Mon-Fri

4:45pm – 6:15pm Mon-Fri



Pine Glen Proposed

1 hour frequency at peak time

7:15am – 8:45am Mon-Fri

5:15am – 6:45am Mon-Fri



Riverview Combo (Proposed)

1 hour frequency Non-peak time

(Amalgamation of 3 routes)

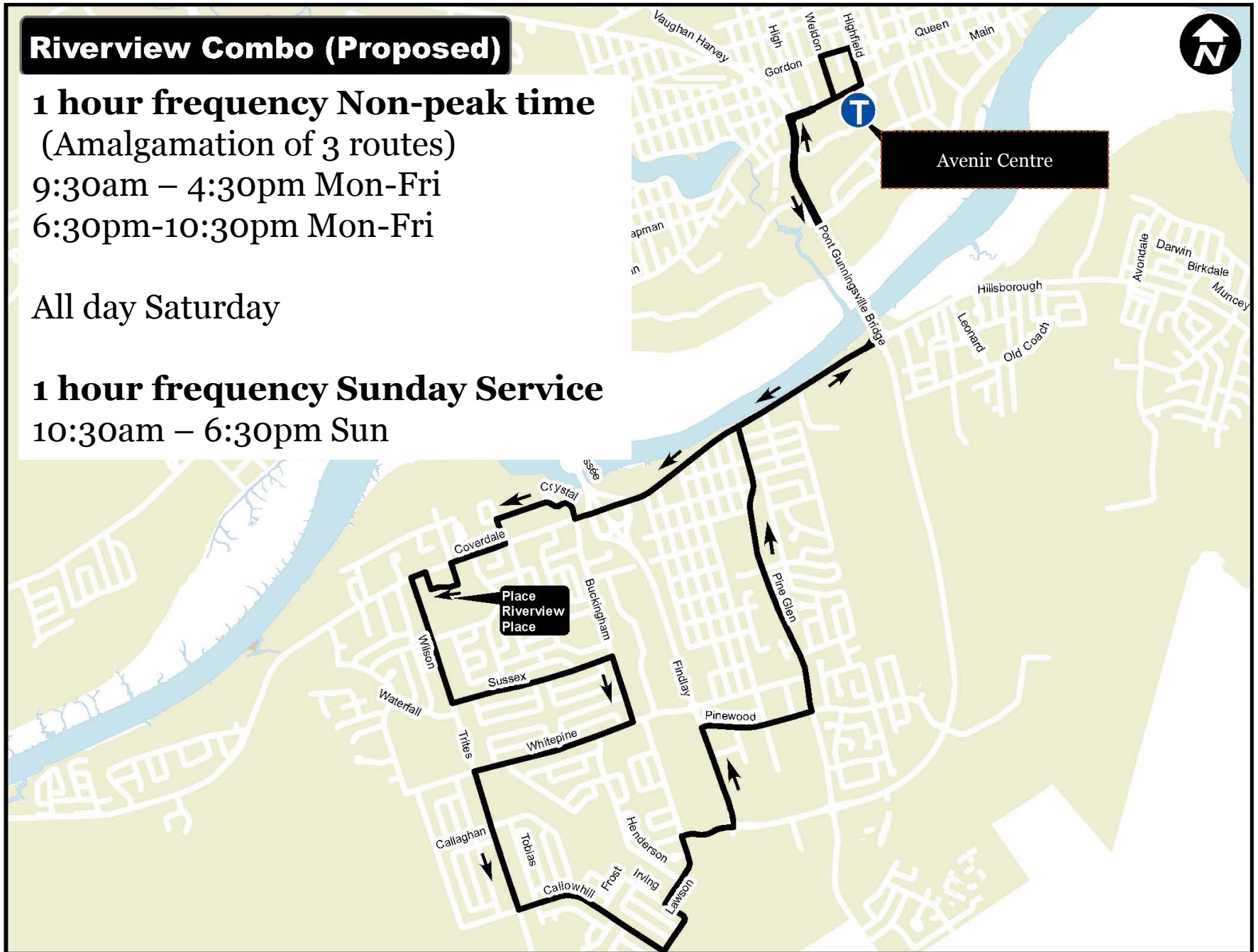
9:30am – 4:30pm Mon-Fri

6:30pm-10:30pm Mon-Fri

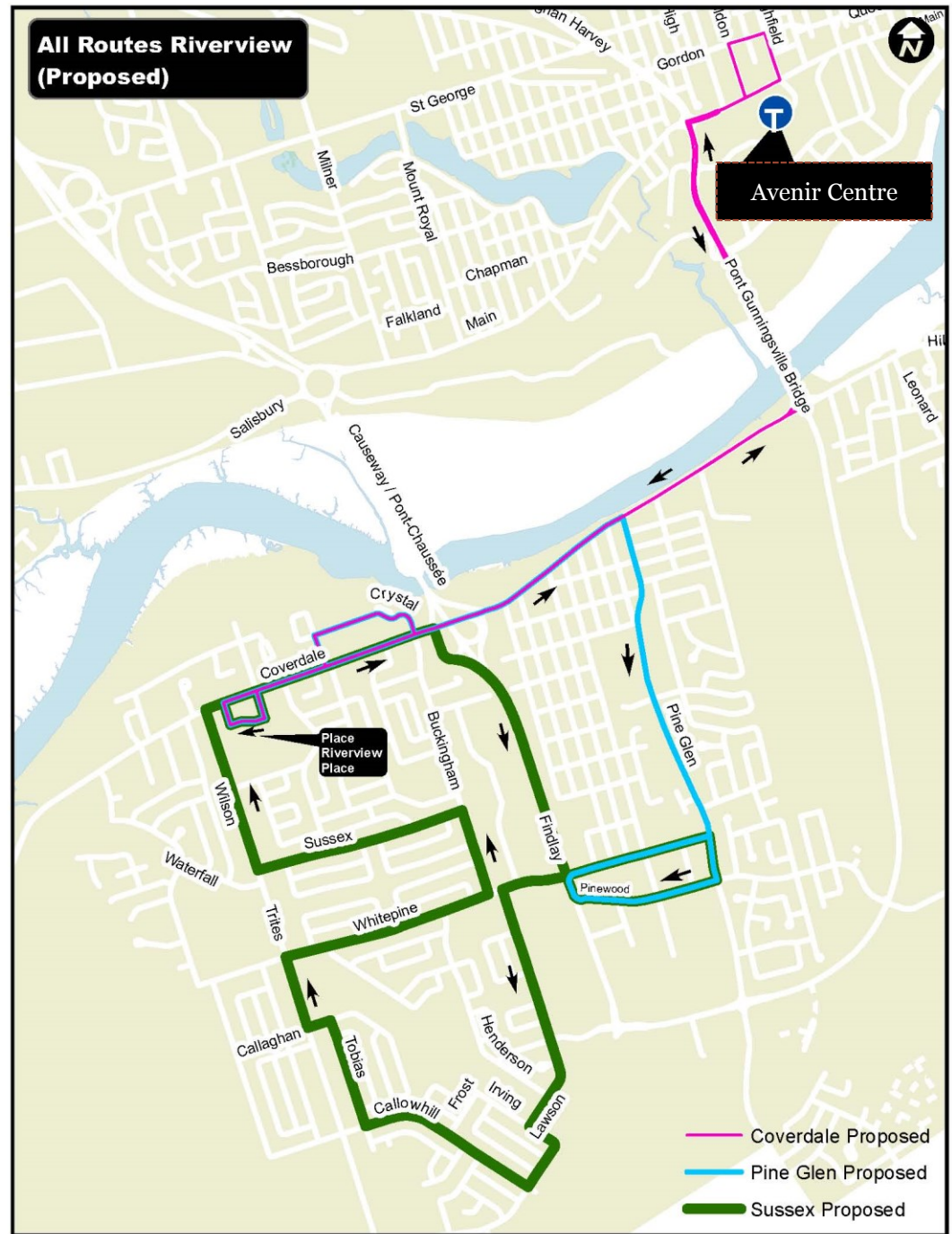
All day Saturday

1 hour frequency Sunday Service

10:30am – 6:30pm Sun



Changes to schedule to eliminate combination runs. Suggesting adding 4 trips /day Monday to Sunday.



Option 1



OVERVIEW - Pros

- 2 way service on a majority of routes
 - Shorter routes in west end
 - Those in walking distance to Coverdale Road – 15 minute frequency at peak – 1 hr at non-peak
 - 1 bus remains in Riverview during peak periods
 - Set up for future expansion
- 4 routes vs. 2 routes
 - More frequency on some routes
 - East to West service
 - Limited or no time transfers
 - Sobeys area development has service every 30 minutes at peak

Option 1



OVERVIEW - Cons

- No direct service to Moncton for residents living in the West end
- Some will have an extra transfer
- West end residents will still have 1 hour service until a third bus is added

Option 2



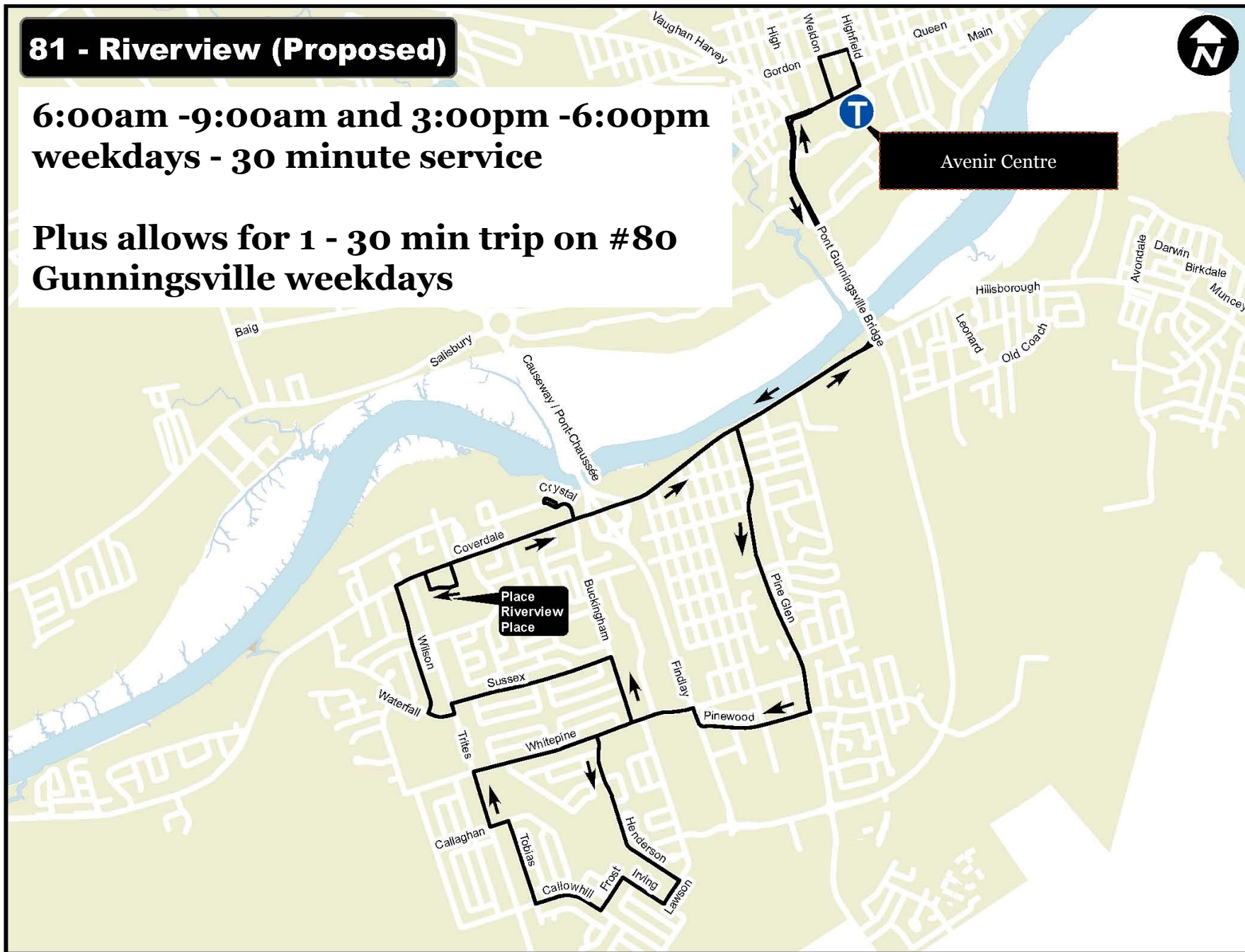
Implementation for July 2019 (decision by May 15)
Implementation for September 2019 (decision by July 19)

(Options are not in any order of priority)

81 - Riverview (Proposed)

**6:00am -9:00am and 3:00pm -6:00pm
weekdays - 30 minute service**

**Plus allows for 1 - 30 min trip on #80
Gunningsville weekdays**



Option 2



Pros

- Less disruptive
- No transfers within Riverview
- Provides #81 with 30 min peak service
- Will now serve Coverdale to bridge
- Provides #80 with another trip per week day
- Prep for causeway detour

Cons

- Remains a very long route